

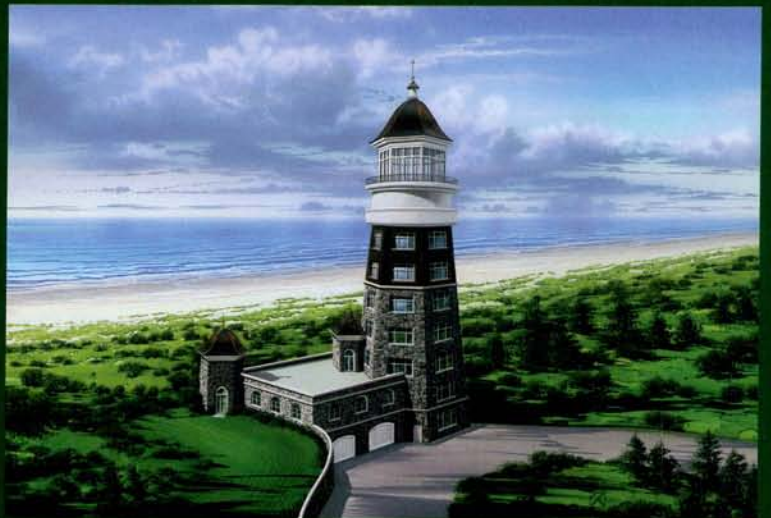
LEADBETTER FARMS

GARGOYLES, DRAGONS ❖ LOCH NESS MONSTER
CAN ALL BE FOUND ON THIS **Washington Coast Estate**

By James M. Williams



Washington coastline estate evokes Cape Cod flair with a Captain's Quarters designed to delight the senses. All photos © James Williams, 2006.



Gargoyles, dragons and a Loch Ness Monster can all be found on this Washington Coast estate. Other wildlife native to the area include bald eagles, owls, deer, and bears. The natural beauty is as rich today as it was when originally discovered by Lewis and Clark. Known as a hiking haven, Leadbetter Point State Park is also one of the best bird-watching areas in the western United States and is neighbor to the privately owned Leadbetter Farms. Leadbetter Farms is a 600-acre retreat located on the Long Beach Peninsula, that was created by Craig Tillotson with the help of J.M. Williams and Associates.

The main house is an oak-timber frame, barn-like structure nestled between the forest and the coastline, literally a cast away from the ocean with a seemingly never-ending beach extending in both directions. At certain times of the year the beach is lined with people digging for oysters. As evening arrives and the sun sets, campfires sparkle like stars along the coast. Restaurants in nearby towns serve an array of oyster dishes. For fish lovers, the local sturgeon is a must.

The oak-timber frame is one of the largest in the country. The "barn" has the charm of Cape Cod architecture, but with a medieval twist. Instead of light airy colors, darker tones were selected, more in harmony with local weathered buildings and the medieval theme. The exterior is clad with slate-like shingles, copper, sidewall shakes, and stone. An occasional dragon or gargoyle can also be spotted. The property has authentic antique European gates at each of its drives.

Adjacent to the "barn" is a man-made lake where you can find a life-size Loch Ness Monster slithering from its depths. The monster is, of course, also man-made. A grounded ship has been refurbished and serves as guest rooms, rivaling any stateroom cabin. If you want to go sailing, there are two seaworthy boats on the lake. The lake is stocked with fish, including sturgeon which can be four- to five-feet long. If you are going to fish for these you'll want to make sure you are in good shape; it's quite a workout. Other amenities include the horse pasture, garages with living space above, and a tree house or two.

A water-tank tower, made to look like a lighthouse soars 140 feet high, making it the tallest structure in the area and a local icon. The lower levels will provide additional garage and living space. The terrace or roof patio on the lower portion of the building will have a panoramic view of the ocean. Once completed, it will also include an exterior fireplace, hot tub and trellis. In the opposite direction will be vistas of the lake and forest. Of course the most breathtaking views will be from the top of the tower.

Continued on next page.

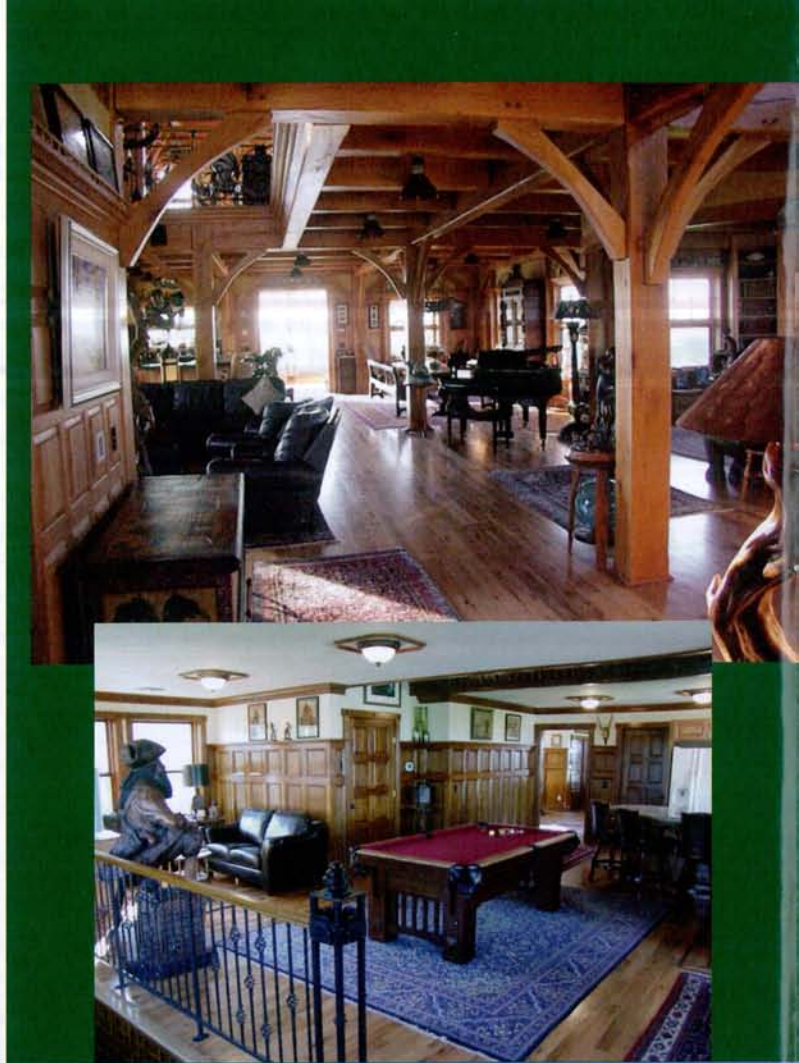


The construction of the water-tank tower is no small undertaking. Ocean-front property must be able to withstand harsh weather. Winds will result in bearing pressures under the tower of 600,000 pounds and an uplift force of 200,000 pounds. The main structure is a steel frame supported on a 3.5-foot thick reinforced concrete pile cap and over 80 steel piles extending approximately 50 feet below grade. The tower will be finished to match the other buildings with sidewall shakes, stone and copper, among other things.

The project is a composition in which every building and structure complements the others. Buildings, although different in size and use, have similar finished materials, architecture and themes.

There is discussion of making this destination available for corporate retreats. This estate property is truly an heirloom that will provide enjoyment for generations to come.

James M Williams is president of JM Williams and Associates Inc., 2875 S. Decker Lake Dr., #275, SLC, UT, 801.575.6455, and cofounder of AE OPUS, www.aeopus.com. Call 801.575.6455 or visit the JMWA website at jmwa.com





Whether your project is; S, M, L, OR XL our architectural and engineering services are tailored just for you. Integrating form and function with materials and methodologies. Rapid, Reliable, Results! Clients include: owners, contractors, developers, corporations, architects, engineers, etc



AE OPUS & J.M. WILLIAMS and Assoc., Inc
architectural and engineering services
2875 South Decker Lake Drive, Suite 275 - SLC, UT 84119
801.746.0456 and 801.575.6455 SLC., UT
a e o p u s . c o m a n d j m w a . c o m